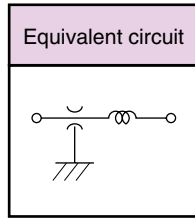
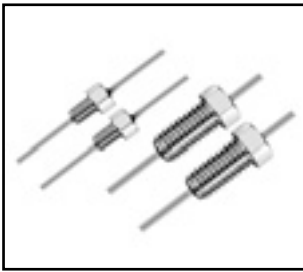


SCREW TYPE EMI FILTERS [FTB Series]



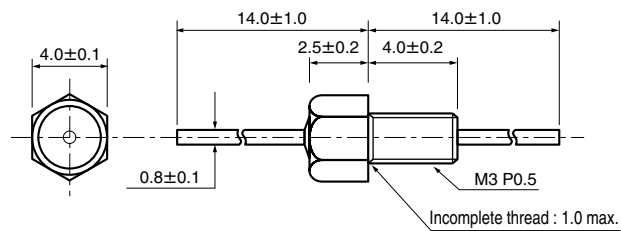
The FTB series is a screw type EMI filter with L type circuit structure, using a feed through ceramic capacitor and a multilayer suppressor. It performs greater attenuation than FTA series.

Part Number List • Specifications for M3, M5 Thread Type

Part number	Capacitance	Capacitance tolerance	Rated voltage	Withstanding voltage	Rated current	Temperature characteristics	Temp. range	Insertion loss	Style
FTB302AR102S-S	1,000pF	+50% -20%	100Vdc	250Vdc	10Adc	R (+15~-15%)	-55~+125°C	①	Style 1
FTB302AR472S-S	4,700pF							②	
FTB302AR103S-S	10,000pF							③	
FTB502AR102S-S	1,000pF							④	Style 2
FTB502AR103S-S	10,000pF							⑤	
FTB502AR473S-S	47,000pF							⑥	

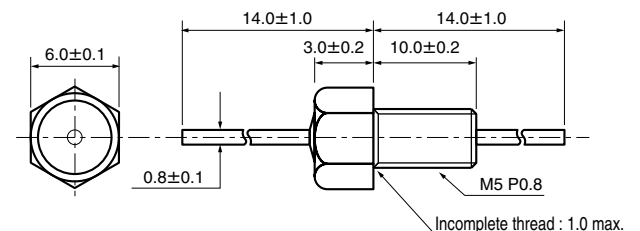
Dimensions (mm)

Style 1



Shell plating spec. : Nickel

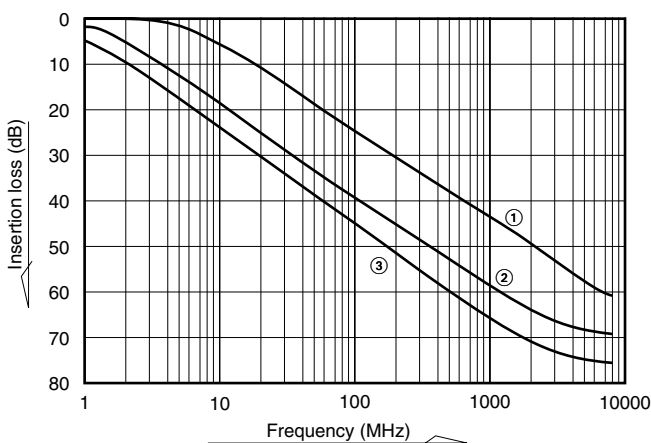
Style 2



Shell plating spec. : Nickel

Insertion loss (Reference)

FTB30 Type Insertion Loss data



FTB50 Type Insertion Loss data

