

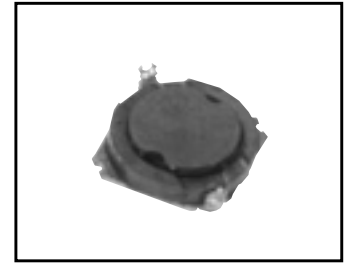
**SMALL FOOT PRINT AND LOW PROFILE POWER INDUCTORS [ CXFU0208 Series ]**

**Features**

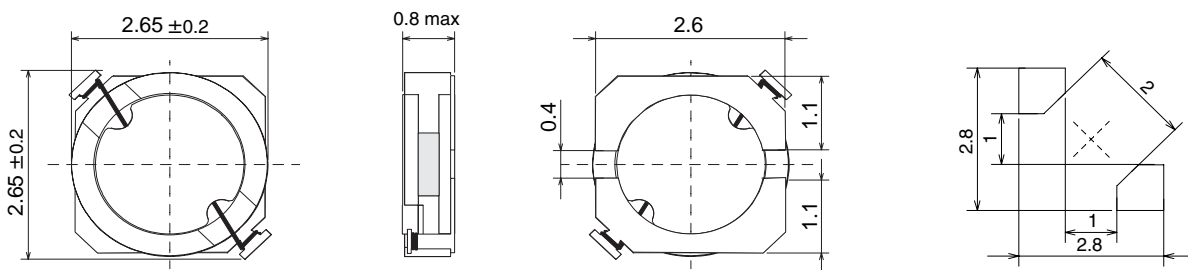
- Shielded power inductors with the smallest footprint, 0.8mm height and low DC-R 2.65 × 2.65(Typ) × 0.8(max)mm
- Low noise and flux by closed magnetic path structure
- RoHS Compliant

**Applications**

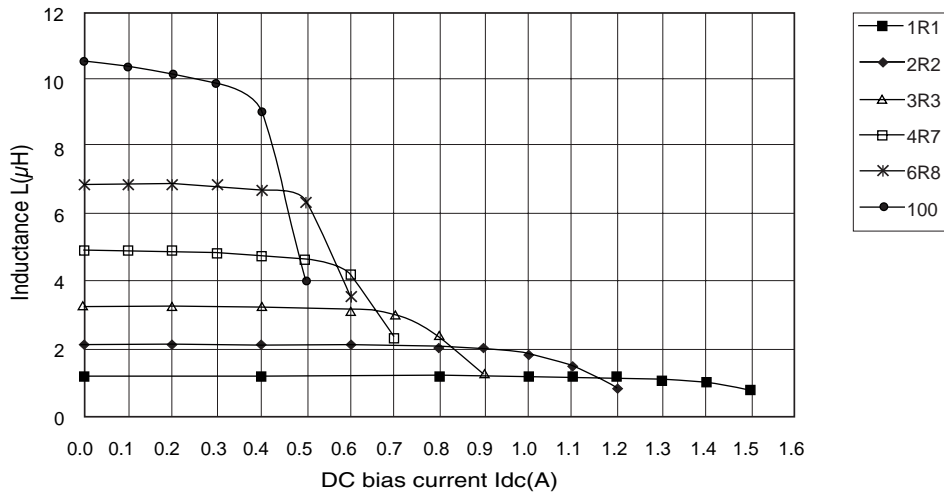
- DC-DC converters for
- Cellular phones, PDAs, Digital still cameras
  - Digital video cameras, and others



**Dimensions/Land pattern(for ref.)<mm>**



**Inductance vs. DC bias current**



**Part number list · Specifications**

( Typical )

Series	Part number	Inductance L (μH) (1)	DC resistance Rdc(Ω) (2)	Rated current Idc1 / Idc2(A) (3)	Operating temperature range Ta ( ) (4)
CXFU0208	CXFU0208-1R1	1.1 ± 30%	0.11	1.1/1.3	-25~100
	CXFU0208-2R2	2.2 ± 30%	0.185	0.85/0.95	
	CXFU0208-3R3	3.3 ± 30%	0.28	0.65/0.7	
	CXFU0208-4R7	4.7 ± 30%	0.44	0.51/0.57	
	CXFU0208-6R8	6.8 ± 30%	0.55	0.45/0.5	
	CXFU0208-100	10 ± 30%	0.93	0.34/0.4	

Note : (1)Ta=25、Idc=0mA (2)Ta=25 (3)Idc1:Temperature rise T 40、Idc2:Inductance change ratio | L/LI 30% (4)Including temperature rise Custom specifications are available.