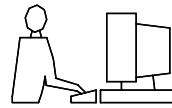


THIS IS A C.A.D. GENERATED DRAWING
DO NOT MAKE MANUAL REVISIONS TO MASTER.

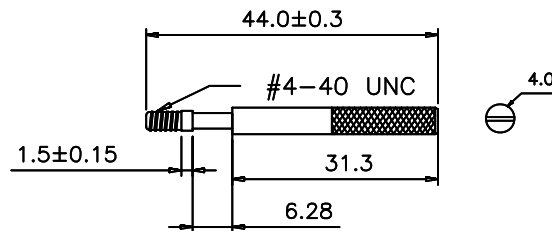
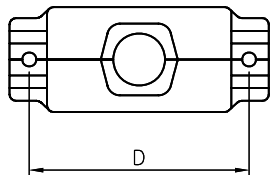
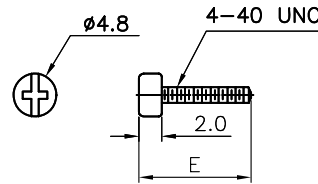
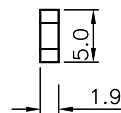
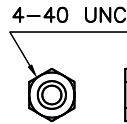
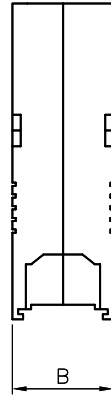
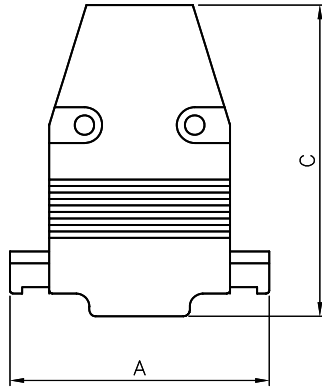


* UNLESS OTHERWISE SPECIFIED TOLERANCES
ON DECIMAL IS: ANGLE ± 1°

UNIT: MM X. ± 0.5
X ± 0.3
.XX ± 0.2

BACKSHELL KIT INCLUDES:

- (2) BACKSHELL HALVES
- (2) 4-40 SHELLSCREWS
- (2) NUTS
- (2) 4-40 LONG JACKSCREW (MEL-VERSION)



DIMENSIONS (mm/in)

SIZE	A ± 0.30 ± 0.012	B ± 0.30 ± 0.012	C ± 0.30 ± 0.012	D ± 0.25 ± 0.01	E ± 0.30 ± 0.012
9	31.0	16.0	47.0	24.99	12.0
	1.22	0.63	1.85	0.984	0.472
15	40.2	16.0	48.3	33.32	12.7
	1.58	0.63	1.90	1.312	0.5
25	53.0	16.0	48.7	47.04	14.0
	2.09	0.63	1.92	1.852	0.551
37	69.0	16.2	48.7	63.50	15.0
	2.72	0.64	1.92	2.500	0.591
50	67.0	19.7	48.4	61.12	15.0
	2.64	0.78	1.91	2.406	0.591

ORDERING INFORMATION:

(LONG JACKSCREW)

SIZE	P/N - KITTED	PRODUCT CODE
9-WAY	2360-0106-11	MHCCOV 9-MEL
15-WAY	2360-0106-12	MHCCOV15-MEL
25-WAY	2360-0106-13	MHCCOV25-MEL
37-WAY	2360-0106-14	MHCCOV37-MEL
50-WAY	2360-0106-15	MHCCOV50-MEL

BACKSHELL MATERIAL: ZINC ALLOY
 PLATING: CHROMATE PLATED
 JACKSCREWS: STEEL WITH NICKEL PLATED
 SHELLSCREWS: STEEL WITH NICKEL PLATED
 NUTS: STEEL WITH NICKEL PLATED
 OPERATING TEMP: -40°C TO +120°C

THESE DRAWINGS AND SPECIFICATIONS ARE THE PROPERTY OF MH CONNECTORS LTD. AND SHALL NOT BE REPRODUCED, COPIED OR USED AS THE BASIS FOR THE MANUFACTURE OR SALE OF APPARATUS WITHOUT WRITTEN PERMISSION.

DRAWN Johnny	DATE 07-09-13
APPROVED	DATE



THIS SERIES FULLY CONFORMS TO THE EUROPEAN UNION DIRECTIVES 2002/95/EC AND 2002/96/EC FOR RoHS COMPLIANCY.



MH CONNECTORS LTD.

SCALE	SHEET OF 1 OF 1	REV: 2.0
DRAWING No MHCCOVXX-MEL		