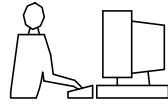


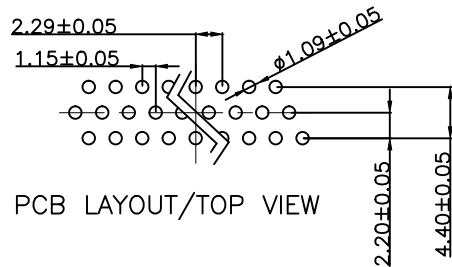
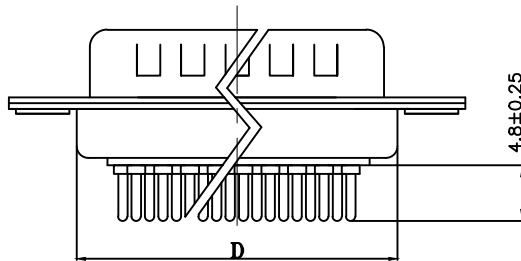
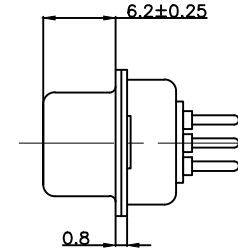
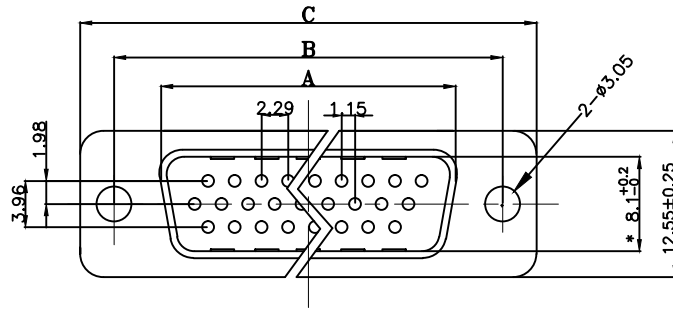
THIS IS A C.A.D. GENERATED DRAWING  
DO NOT MAKE MANUAL REVISIONS TO MASTER.



\* UNLESS OTHERWISE SPECIFIED TOLERANCES  
ON DECIMAL IS: X.X ±0.35  
                  X.XX ±0.25  
                  X.XXX ±0.15  
UNIT: MM      X." ±1"  
                  X.X" ±0.05"

ISSUE NUMBER

ORIGINAL	①
Changed the shell plating from tin to nickel Iven Ou 2022/08/18	③
UPDATING FRAME Iven Ou 2023/03/10	④



NOTES:

1. MATERIALS AND FINISH

- 1.1 SHELL : STEEL MATERIAL, FRONT NICKEL FINISHED  
                  BACK SHELL NICKEL FINISHED
- 1.2 INSULATOR : PBT THERMOPLASTIC, 30% GLASS  
                  FILLED, UL 94V-0 RATED, BLACK COLOR
- 1.3 CONTACT MATERIAL : BRASS
- 1.4 CONTACT FINISH : GOLD FLASH OVER NICKEL

2. ELECTRICAL CHARACTERISTICS

- 2.1 CONTACT CURRENT RATING : 5.0 AMPS
- 2.2 CONTACT RESISTANCE : 30 MILLIOHMS MAX.
- 2.3 DIELECTRIC WITHSTANDING VOLTAGE : 1000 V AC MIN.
- 2.4 INSULATION RESISTANCE : 5000 MEGOHMS MIN.
- 2.5 TEMPERATURE RATING : -55°C ~ +105°C

Order Information	Dimensions(mm)				
	PART NO.	POS.	A±0.25	B±0.25	C±0.25
MHHDD15-M-N-B-M	15	16.92	24.99	30.81	19.24
MHHDD26-M-N-B-M	26	25.25	33.30	39.20	27.70
MHHDD44-M-N-B-M	44	38.96	47.04	53.04	41.30
MHHDD62-M-N-B-M	62	55.42	63.50	69.45	57.25

THESE DRAWINGS AND SPECIFICATIONS ARE THE PROPERTY OF MH CONNECTORS AND SHALL NOT BE REPRODUCED, COPIED OR USED AS THE BASIS FOR THE MANUFACTURE OR SALE OF APPARATUS WITHOUT WRITTEN PERMISSION.

DRAWN  
Iven Ou  
DATE  
2022/08/18

APPROVED  
DATE

SCALE  
1 : 1  
SHEET OF  
1 OF 1  
REV:  
4.0

DRAWING No  
MHHDDXX-M-N-B-M



THIS SERIES FULLY CONFORMS TO THE EUROPEAN UNION DIRECTIVES 2015/863/EU AND 2011/65/EU FOR RoHS COMPLIANCY.



MH CONNECTORS,  
DIVISION OF EDAC