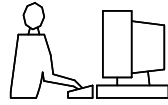
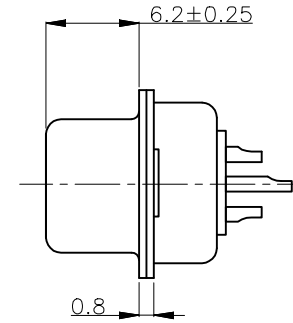
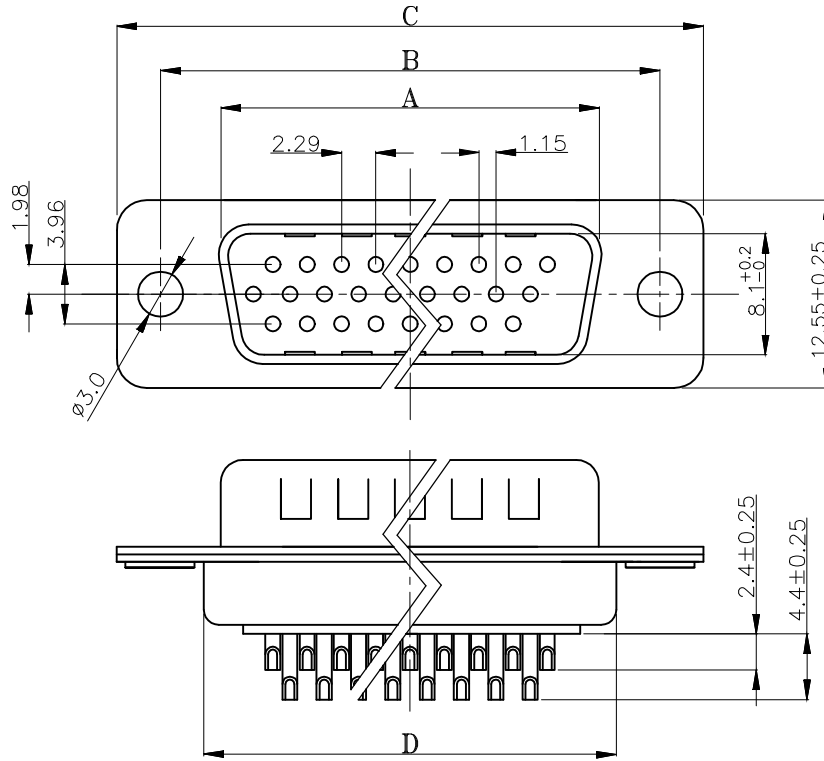


THIS IS A C.A.D. GENERATED DRAWING  
DO NOT MAKE MANUAL REVISIONS TO MASTER.



\* UNLESS OTHERWISE SPECIFIED TOLERANCES  
ON DECIMAL IS: ANGLE X.' ±2"  
X.X' ±0.5"  
X.X ±0.25  
X.XX ±0.10  
X.XXX ±0.05



Ordering Information		Dimensions(mm)				
Part Number	SIZE	A±0.2	B±0.2	C±0.2	D±0.2	
MHHDS-15-M-T-B-M	15	16.92	24.99	30.81	19.24	
MHHDS-26-M-T-B-M	26	25.25	33.30	39.20	27.70	
MHHDS-44-M-T-B-M	44	38.96	47.04	53.04	41.10	
MHHDS-62-M-T-B-M	62	55.42	63.50	69.45	57.25	

Order Codes:

Plug Connector	Machined Contacts
15 2101-0400-01	MHHDS-15-M-T-B-M
26 2101-0400-02	MHHDS-26-M-T-B-M
44 2101-0400-03	MHHDS-44-M-T-B-M
62 2101-0400-04	MHHDS-62-M-T-B-M

## 1. MATERIALS AND FINISH

- 1.1 SHELL: STEEL MATERIAL, FRONT TIN FINISHED  
BACK SHELL TIN FINISHED.
- 1.2 INSULATOR: PBT THERMOPLASTIC, 30% GLASS  
FILLED, UL 94V-0 RATED, BLACK COLOR.
- 1.3 CONTACT MATERIAL: BRASS.
- 1.4 CONTACT FINISH: FULL GOLD FINISHED.

## 2. ELECTRICAL CHARACTERISTICS

- 2.1 CONTACT CURRENT RATING: 5.0 AMPS.
- 2.2 CONTACT RESISTANCE: 30 MILLIOHMS MAX.
- 2.3 DIELECTRIC WITHSTANDING VOLTAGE: 1000V AC MIN.
- 2.4 INSULATION RESISTANCE: 5000 MEGAOHMS MIN.
- 2.5 TEMPERATURE RATING: -55°C~+105°C.
- 2.6 SUITABLE FOR 500 MATING CYCLES.

THESE DRAWINGS AND SPECIFICATIONS ARE THE  
PROPERTY OF MH CONNECTORS LTD. AND SHALL NOT  
BE REPRODUCED, COPIED OR USED AS THE BASIS FOR  
THE MANUFACTURE OR SALE OF APPARATUS WITHOUT  
WRITTEN PERMISSION.

DRAWN HALEY		DATE 11-04-13	
APPROVED		DATE	
SCALE	SHEET OF 1 OF 1	REV: 2.0	
DRAWING No MHHDS-XX-M-T-B-M			



THIS SERIES FULLY CONFORMS TO THE  
EUROPEAN UNION DIRECTIVES 2002/95/EC  
AND 2002/96/EC FOR RoHS COMPLIANCY.



MH CONNECTORS LTD.