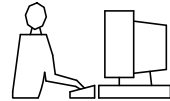
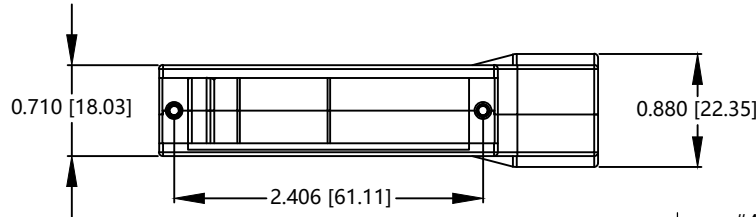
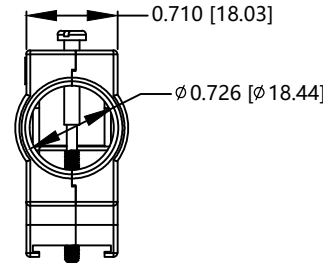
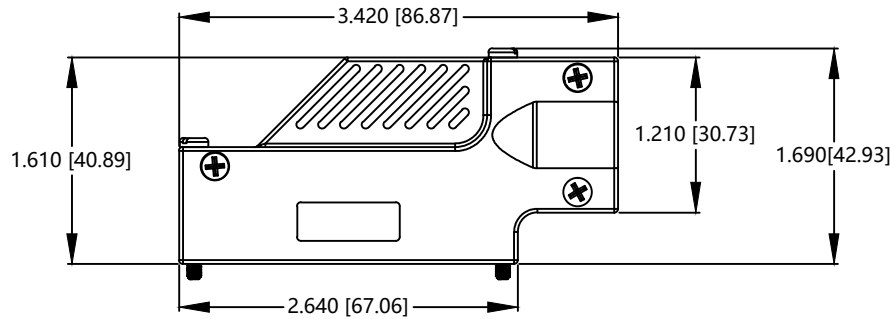


THIS IS A C.A.D. GENERATED DRAWING
DO NOT MAKE MANUAL REVISIONS TO MASTER.

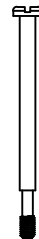
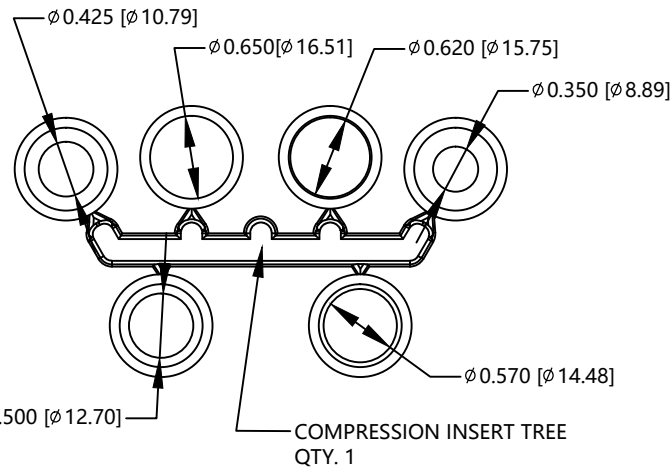


* UNLESS OTHERWISE SPECIFIED TOLERANCES
ON DECIMAL IS: ANGLE
UNIT: MM X.
X.X

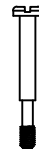
ISSUE NUMBER
ORIGINAL ①
REMOVE THE FORM FOR PART NUMBER INFORMATION ② 2023/03/13



#4-40 X 0.5" PHILLIPS HEAD MACHINE SCREW
- STAINLESS STEEL
QTY: 3 EACH



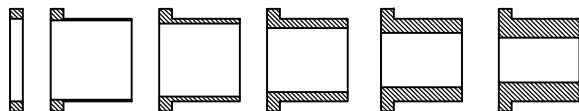
#4-40 X 1.80" SLOTTED MATING SCREW
- STEEL, NICKEL PLATED
QTY: 1 EACH



#4-40 X 1.10" SLOTTED MATING SCREW
- STEEL, NICKEL PLATED
QTY: 1 EACH

CONNECTOR COVER:
1.MATERIAL : ZINC ALLOY
2.FINISH : NICKEL PLATING PER NTC SPECIFICATION N/T 000400
3.DIMENSIONS : INCHES [MM]
4.TOLERANCE : ±0.015 [0.381]

COMPRESSION INSERT TREE
1.MATERIAL : THERMOPLASTIC
2.COLOR : BLACK
3.DUROMETER : 75±5 TYPE A PER ASTM D2240
4.DIMENSIONS : INCHES [MM]
5.TOLERANCE : ±0.020 [0.508]



THESE DRAWINGS AND SPECIFICATIONS ARE THE PROPERTY OF MH CONNECTORS AND SHALL NOT BE REPRODUCED, COPIED OR USED AS THE BASIS FOR THE MANUFACTURE OR SALE OF APPARATUS WITHOUT WRITTEN PERMISSION.

DRAWN Henry Pan		DATE 2023/02/28	
APPROVED		DATE	
SCALE 1:1	SHEET OF 1 OF 1	REV: 2	
DRAWING No MHDCMR50-ULP			



THIS SERIES FULLY CONFORMS TO THE EUROPEAN UNION DIRECTIVES 2015/863/EU AND 2011/65/EU FOR RoHS COMPLIANCY.



MH CONNECTORS,
DIVISION OF EDAC