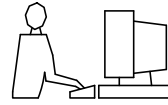


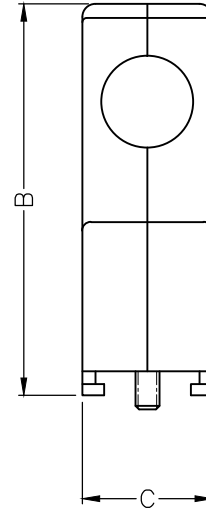
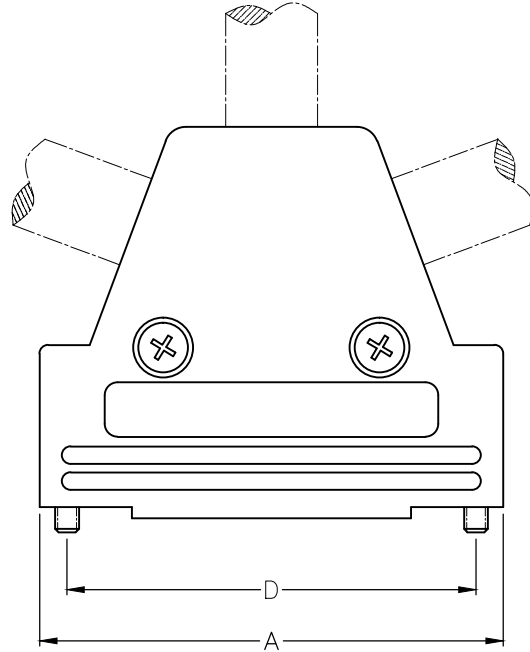
THIS IS A C.A.D. GENERATED DRAWING  
DO NOT MAKE MANUAL REVISIONS TO MASTER.



\* UNLESS OTHERWISE SPECIFIED TOLERANCES  
ON DECIMAL IS: ANGLE  $\pm 1^\circ$   
UNIT: MM

**BACKSHELL KIT INCLUDES:**

- (2)BACKSHELL HALVES
- (2)JACKSCREW 4-40
- (2)SHELL SCREW
- (2)METAL CLAMP
- (4)CLAMP SCREW
- (2)BLANKING PLATE



DIMENSIONS(mm/in)				
Size	A <sup>±1.30</sup> <sub>±0.051</sub>	B <sup>±1.30</sup> <sub>±0.051</sub>	C <sup>±1.20</sup> <sub>±0.047</sub>	D <sup>±0.25</sup> <sub>±0.01</sub>
9	31.00	41.40	15.00	24.99
	1.221	1.630	0.591	0.984
15	40.30	45.20	15.00	33.32
	1.587	1.780	0.591	1.312
25	53.50	45.20	15.00	47.04
	2.106	1.780	0.591	1.852
37	70.00	45.20	15.00	63.50
	2.756	1.780	0.591	2.500

**ORDERING INFORMATION:**

SIZE	P/N-KITTED	PRODUCT CODE
9-WAY	6550-0100-01	MHTRI-M-09-K
15-WAY	6550-0100-02	MHTRI-M-15-K
25-WAY	6550-0100-03	MHTRI-M-25-K
37-WAY	6550-0100-04	MHTRI-M-37-K

BACKSHELL MATERIAL: ABS UL 94-HB RATED  
 PLATING: NICKEL  
 JACKSCREW 4-40: STEEL ZINC PLATED  
 SHELL SCREW: STEEL ZINC PLATED  
 METAL CLAMP: STEEL ZINC PLATED  
 CLAMP SCREW: STEEL ZINC PLATED  
 BLANKING PLATE: ABS UL RECOGNIZED  
 PLATING: NICKEL  
 OPERATING TEMP: -55°C TO +120°C

THESE DRAWINGS AND SPECIFICATIONS ARE THE PROPERTY OF MH CONNECTORS AND SHALL NOT BE REPRODUCED, COPIED OR USED AS THE BASIS FOR THE MANUFACTURE OR SALE OF APPARATUS WITHOUT WRITTEN PERMISSION.

DRAWN Johnny DATE 11-24-15

APPROVED Victor Lin DATE 11-24-15

SCALE 1 : 1 SHEET OF 1 OF 1 REV: 7.0

DRAWING No MHTRI-M-SERIES



THIS SERIES FULLY CONFORMS TO THE EUROPEAN UNION DIRECTIVES 2002/95/EC AND 2002/96/EC FOR RoHS COMPLIANCY.



**MH CONNECTORS ,  
DIVISION OF EDAC**