

MULTILAYER CERAMIC CAPACITORS FOR STROBE CIRCUIT [ TC Series ]

■ Features

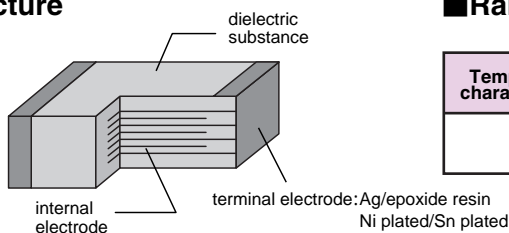
- Superior in emission characteristics.
- Superior in DC bias characteristics.
- Low dielectric loss.
- RoHS Compliant.
- Low profile.

■ Applications

- Trigger for strobe circuit.



■ Structure



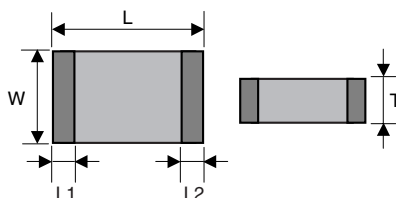
■ Range of Use

Temperature characteristics	EIA symbol	Capacitance change	Temperature range	Capacitance tolerance
R	X7R	±15%	-55~+125	K (±10%)

■ Capacitance Map

Type	TC30 (3.2 × 1.6)
rated voltage	350Vdc (2V)
capacitance	
223 22nF	1.00
273 27nF	1.25
333 33nF	1.25
473 47nF	1.80

■ Dimensions



Unit : mm

Type	EIA symbol	L	W	T	L1, L2
TC30	1206	3.2±0.2	1.6±0.2	1.80 max.	0.2~

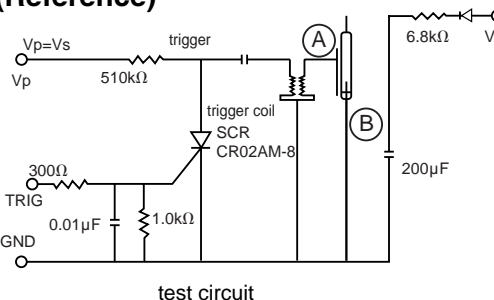
■ List of products in TC Series

Rated Voltage : 350Vdc

Part Number	Capacitance(µF)	Product height T (mm)
TC30R2V223K-TS	22,000	1.00+0/-0.25
TC30R2V273K-TS	27,000	1.25+0/-0.30
TC30R2V333K-TS	33,000	1.25+0/-0.30
TC30R2V473K-TS	47,000	1.80+0/-0.40

- \* Please contact us for the details of bulk packing.
- \* Highly reliable Ni-barrier terminations show excellent flexion and temperature cycling.

■ Trigger voltage characteristics (Reference)



■ Trigger voltage characteristics (Reference)

Trigger voltage characteristics-TC30R2V333K-TS  
【 A-B voltage waveform 】

