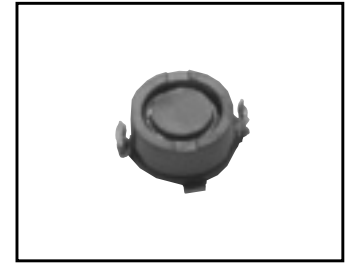


**SMALL FOOT PRINT AND LOW PROFILE POWER INDUCTORS [ CXTU0214 Series ]**

**Features**

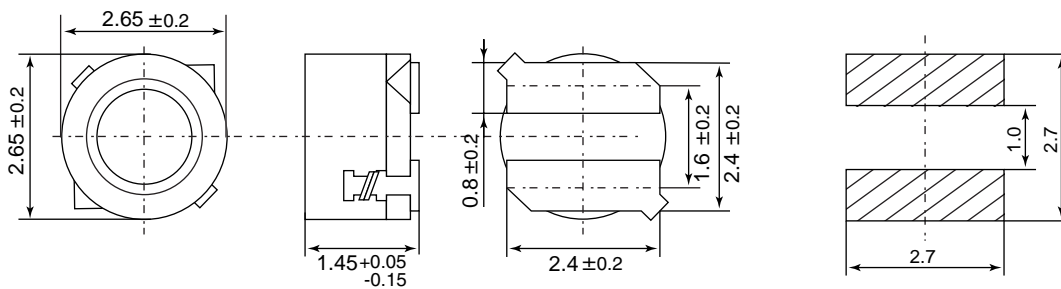
- Shielded power inductors with the smallest footprint 2.65x2.65x1.5mm
- Low noise and flux by closed magnetic path structure
- RoHS Compliant



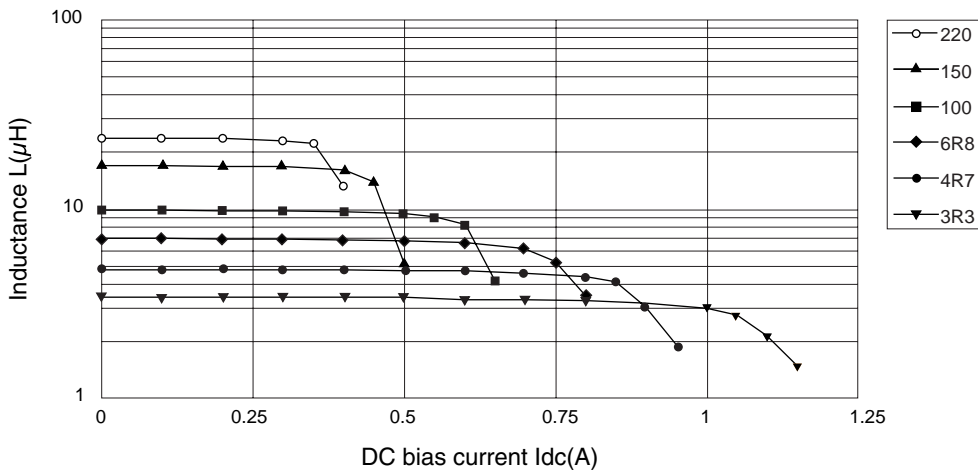
**Applications**

- DC-DC converters for
- Cellular phones, PDAs, Digital still cameras
- Digital video cameras, and others

**Dimensions/Land pattern(for ref.)<mm>**



**Inductance vs. DC bias current**



**Part number list · Specifications**

( Typical )

Series	Part number	Inductance L (μH) (1)	DC resistance Rdc(Ω) (2)	Rated current Idc(A) (3)	Operating temperature range Ta( ) (4)
CXTU0214	CXTU0214-3R3	3.3±20%	0.16	0.90	-25~100
	CXTU0214-4R7	4.7±20%	0.23	0.80	
	CXTU0214-6R8	6.8±20%	0.37	0.65	
	CXTU0214-100	10±20%	0.60	0.55	
	CXTU0214-150	15±20%	0.93	0.40	
	CXTU0214-220	22±20%	1.2	0.35	

Note : (1)Ta=25、Idc=0mA (2)Ta=25 (3)Inductance change ratio | L/LI | 20% or T 40 (4)Including temperature rise  
 Custom specifications are available.