

CHIP TYPE EMI FILTERS [CNF31 · CNH31 · CNH30 · CNH32 Series]

The CNF31 · CNH31 · CNH30 · CNH32 series is a 3-terminal EMI filter for SMT based on multilayer chip capacitor technology. The CNH series is suited for reducing EMI noise on DC power lines.

■ Features

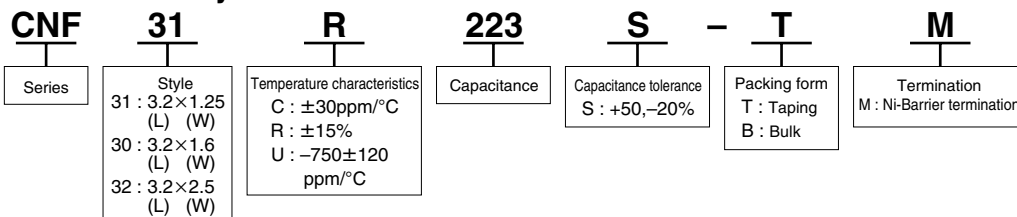
- Due to its small size and low residual inductance, noise reduction is possible at higher frequencies than conventional capacitors.
- High current rating (~2A), makes it well suited for reducing EMI noise on DC power lines.
- High capacitance (0.1μF max.) enables reduction of noise over a wide frequency range.
- Nickel and tin plated barrier terminations offer good solderability and resistance to soldering heat.
- RoHS Compliant.

■ Applications

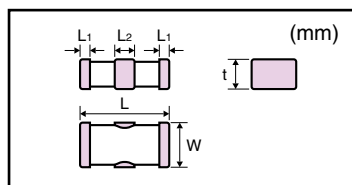
Noise reduction for signal lines and DC lines in computers, computer peripheral equipment, digital TV, DVD recorder, cellular telephone, automotive electronics, printer, FAX, etc.



■ Part Number System

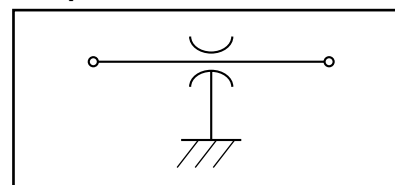


■ Dimensions



Type	L	W	t	L1	L2
CNF31 CNH31	3.2±0.2	1.25±0.2	0.7±0.2	0.4±0.3	1.1±0.3
CNH30		1.6±0.2	1.3±0.2	0.4±0.2	1.1±0.2
CNH32		2.5±0.2	1.6±0.2		

■ Equivalent circuit



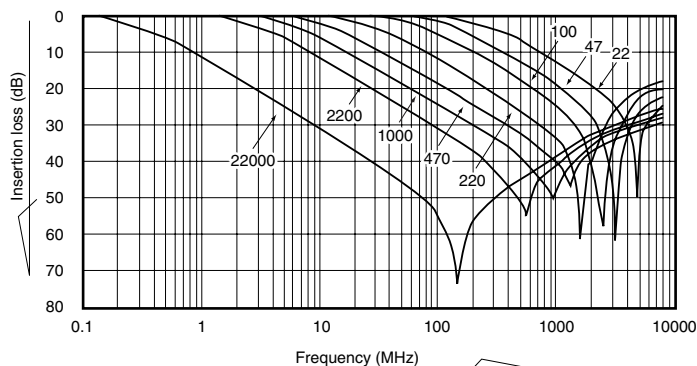
■ Part Number List • Specifications

Part number	Capacitance	Capacitance tolerance	Rated voltage	Rated current	IR	DC resistance	Temp. range					
CNF31C220S-□M	22pF	+50, -20%	50V DC	0.3A DC	10,000MΩmin.	0.3 Ωmax.	-55~+125°C					
CNF31C470S-□M	47pF											
CNF31C101S-□M	100pF											
CNF31C221S-□M	220pF											
CNF31R471S-□M	470pF											
CNF31R102S-□M	1,000pF											
CNF31R222S-□M	2,200pF											
CNF31R223S-□M	22,000pF											
CNH31U332S-□M	3,300pF							±20%	25V DC	2 A DC	1,000MΩmin.	0.05Ωmax.
CNH31R223S-□M	22,000pF								50V DC		1 A DC	10,000MΩmin.
CNH31R473S-□M	47,000pF	25V DC	2 A DC	1,000MΩmin.	0.07Ωmax.	-55~+85°C						
CNH30R104S-□M	100,000pF											
CNH30R106M-□M	10 μF	16V DC	6 A DC	50MΩmin.	10mΩmax.							
CNH32R106M-□M	10 μF	25V DC		50MΩmin.								
CNH30R226M-□M	22 μF	6.3V DC		25MΩmin.								
CNH32R476M-□M	47 μF	4.0V DC		10MΩmin.		5mΩmax.						

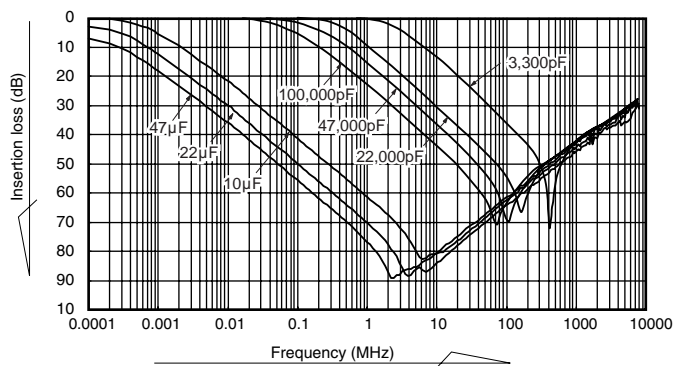
□ : "T" stands for taping package and "B" stands for bulk package.

■ Insertion loss (Reference)

CNF31 TYPE



CNH31 ,CNH30 ,CNH32 TYPE



EMI FILTERS